



**2010 Rolex Miami OCR**  
**Miami FL USA**  
**24-30 January 2010**

An ISAF Sailing World Cup Event



## 1 RULES

- 1.1 The regatta will be governed by the rules as defined in *The Racing Rules of Sailing* (RRS).
- 1.2 If there is a conflict between languages the English text will take precedence.
- 1.3 For medal races, ISAF Addendum Q, *Unpiloted Fleet Racing*, will apply and takes precedence over any conflicting instructions.
- 1.4 For the Women's Keelboat Match Racing Event:
  - 1.4.1 SI Addendum C, Rules for the Handling of Boats will apply, including for practice racing. The International Elliott 6m Class rules do not apply.
  - 1.4.2 RRS 40.1 shall be changed as follows: All competitors are required to wear life jackets or other adequate personal buoyancy while racing. The "Y" flag will not be displayed.
  - 1.4.3 Add to RRS 41: (e) help to recover from the water and return on board a crew member, provided the return on board is at the approximate location of the recovery.
- 1.5 The US SAILING prescriptions that apply are stated in full in NoR Addendum C.

## 2 IDENTIFICATION, ADVERTISING and ASSIGNMENT OF BOATS

- 2.1 Fleet racing, while racing:
  - 2.1.1 Boats in all events shall display event sponsor advertising. The organizing authority will supply the advertising materials and instructions for their use.
  - 2.1.2 For split fleet events, boats shall display a coloured mast band corresponding to the fleet to which she has been assigned. The organizing authority will supply the bands and instructions for their use.
  - 2.1.3 Each day, the first, second and third boats in series ranking at the beginning of the day shall display a yellow, blue and red bib on the crew, respectively. The organizing authority will supply the bibs and instructions for their use.

**alphagraphics®**

DESIGN ■ COPY ■ PRINT ► COMMUNICATE



## 2.2 Match racing:

- 2.2.1 Boats will be identified by bow numbers.
- 2.2.2 The mainsails shall display skippers' names as supplied by the organizing authority.
- 2.2.3 Boats will be allocated by the organizing authority for each stage in accordance with a pre-determined draw.
- 2.2.4 Boats will be exchanged in accordance with the pairing list and race schedule.
- 2.2.5 The organizing authority will decide which boats are to be used for each stage and when it decides a boat should not be used, the skipper assigned that boat will be given the temporary use of another boat.

## 3 COMMUNICATIONS WITH COMPETITORS

- 3.1 Notices to competitors will be posted on the official notice board located on the ground floor of the US Sailing Center. Notices will also be posted on the US SAILING web site at: <http://www.rolexmiamiocr.org> and may be posted at other locations specified in SI Addendum E.
- 3.2 When a visual signal is displayed over an area, event, fleet, or match flag, the signal applies only to that area, event, fleet or match. This changes Race Signals preamble.
- 3.3 Signals ashore will be displayed on the flag pole by the water at the US Sailing Center and at other locations specified in SI Addendum E.
- 3.4 When flag AP is displayed ashore, '1 minute' is replaced with 'not less than 90 minutes' in the Race Signal AP. Flag AP over H displayed ashore means 'Boats shall not leave the harbour. Wait for further instructions.' This changes Race Signals AP over H.
- 3.5 When flag Y is displayed ashore, RRS 40 applies at all times while afloat. This changes the Part 4 preamble.
- 3.6 For match racing when afloat,
  - 3.6.1 Changes to the sailing instructions made afloat will be signalled by the display of flag 3rd substitute with three sound signals. An umpire will communicate these either verbally or in writing.
  - 3.6.2 The sail combination to be used will be signaled from the RC boat with or before the attention signal:

Signal	Sail Combination to be Used
No Signal	Jib, Mainsail and Spinnaker
Flag Z	Jib and Mainsail only

- 3.6.3 Other restrictions or instructions may be given to the boats verbally by an umpire. Flag 3rd substitute is not required.

## 4 CHANGES TO SAILING INSTRUCTIONS

- 4.1 Any change to the schedule of races will be posted by 2100 on the day before it will take effect.
- 4.2 Any reassignment of events or fleets to racing areas will be posted before 0900 on the day it will take effect, or if flag AP is displayed ashore, 30 minutes before flag AP for that class or fleet is removed.
- 4.3 For fleet racing, any change to the sailing instructions will be posted before 0900 on the day it will take effect.
- 4.4 For match racing, any change to the sailing instructions made ashore will be posted at least 30 minutes before the start of any race affected.

## 5 FORMAT OF RACING

### 5.1 Fleet racing:

5.1.1 The format is an Opening Series followed by a Medal Race, except for Paralympic events where there will be no Medal Race. If the event is split into fleets, the Opening Series will be divided into a Qualifying Series and a Final Series.

5.1.2 The number of fleets for an event may be changed until 2100 on the day before the first scheduled race when an updated version of the schedule will be posted on the Official Notice Board as part of these sailing instructions.

#### 5.1.3 Qualifying Series:

(a) Boats will be assigned to fleets Yellow and Blue of, as nearly as possible, equal size and ability. Initial assignments will be made by a seeding committee appointed by the race committee. Those assignments will be posted by 2100 on the day before the first scheduled race for each event.

(b) Boats will be reassigned to fleets after each day of racing, except if on the first day only one race is completed. If all fleets have completed the same number of races, boats will be reassigned on the basis of their ranks in the series. If all fleets have not completed the same number of races, the series scores for reassignment will be calculated for those races, numbered in order of completion, completed by all fleets. Reassignments will be made as follows:

<u>Rank in series</u>	<u>Fleet assignment</u>
First	Yellow
Second	Blue
Third	Blue
Fourth	Yellow
Fifth	Yellow
and so on	

If two or more boats have the same rank, they will be entered in the left column in the order of fleets in SI 7.1.3(a).

(c) Assignments will be based on the ranking available at 2100 that day regardless of protests or requests for redress not yet decided.

(d) If all fleets have not completed the same number of races by the end of a day, the fleets with fewer races will continue racing the following day until all fleets have completed the same number of races. All boats will thereafter race in the new fleets.

#### 5.1.4 Final Series:

(a) Boats will be assigned to final-series fleets, Gold and Silver, on the basis of their ranks in the qualifying series. There will be the same number of fleets in the final series as there were in the qualifying series. The final-series fleets will have, as nearly as possible, equal size but so that the Silver fleet is not larger than the Gold fleet. Boats with the best qualifying-series ranks will race all final-series races in the Gold fleet, boats with the next-best qualifying-series ranks will race in the Silver fleet.

(b) Any recalculation of qualifying-series ranking after boats have been assigned to final-series fleets will not affect the assignments except that a redress decision may promote a boat to a higher fleet.

#### 5.1.5 Medal Race:

(a) For classes/events with a Medal Race the ten boats ranked highest in the opening series will be assigned to compete in the medal race.

(b) Assignments to the medal race will be based on the ranking available at 0800 on the day of the medal race. The protest committee may extend the time limit.

## 5.2 Match racing:

### 5.2.1 Format:

- Stage 1: Opening Round Robin Series with 24 teams divided into 3 equal ability groups based on the ISAF Match Racing Women ranking list 30 days prior to the event. Each group will sail a round robin, where each teams sails each other team once. The top 2 teams in each group go to the Gold Group (Stage 3), the next 2 teams go to the Repechage (Stage 2), the next 2 go to the Silver Group (Stage 4) and the bottom 2 teams go to the Bronze Group (Stage 4).
- Stage 2: Repechage Round Robin Series with 6 teams (the 3rd and 4th teams from each Stage 1 group). These 6 teams will sail a round robin, where each teams sails each other team once. The top 2 teams go to the Quarter Finals (Stage 5). The bottom 4 teams will determine places 9 through 12 in the final standings. If RRS C11.1 does not resolve a tie that involves any of the top 2 teams, RRS C11.3 will be used. If the tie only involves the bottom 4 teams, there will not be a sail-off, but the tie breaking procedure in RRS C11.3 will be used.
- Stage 3: Gold Group Round Robin Series with 6 teams (top 2 teams from each Stage 1 group). These 6 teams will sail a round robin, where each teams sails each other team once. This will determine the seeding for the Quarter Finals (Stage 5).
- Stage 4: Silver and Bronze Group Round Robin Series with 12 teams. The 6 teams in the Silver Group will sail a round robin, where each teams sails each other team once. This will determine places 13 through 18 in the final standings. The 6 teams in the Bronze Group will sail a round robin, where each teams sails each other team once. This will determine places 19 through 24 in the final standings. If RRS C11.1 does not resolve a tie in these round robins, there will not be a sail-off, but the tie breaking procedure in RRS C11.3 will be used.
- Stage 5: Quarter Finals with 8 teams. They will be paired such that the first team in Stage 3 will sail against the second team in Stage 2, the second team in Stage 3 will sail against the first team in Stage 2, the third team in Stage 3 will sail against the sixth team in Stage 3, and the fourth team in Stage 3 will sail against the fifth team in Stage 3. The team mentioned first in each of these pairs will be Yellow in the first match. The winner of each pair will be the first team to score 3 points (2 points if time is short). The winners go to the Semi Finals (Stage 6) and the losers go to the Sail Offs (Stage 6).
- Stage 6: Semi Finals and Sail Offs. In the Semi Finals, the winner of the pair mentioned first in Stage 5 will sail against the winner of the pair mentioned last. The two remaining winners will sail each other. The assignment of sides will be decided through a draw. The winner of each pair will be the first team to score 3 points. The winners go to the Final (Stage 7) and the losers go to the Petit Final. In the Sail Offs, the four losers of Stage 5 will be paired the same way as the winners. The assignment of sides will be decided through a draw. The winner of each pair will be the first team to score 1 point. The two winners will go to the 5 to 6 Sail Off, and the two losers will go to the 7 to 8 Sail Off. The assignment of sides will be decided through a draw. The winner of each pair will be the first team to score 1 point. The Sail Offs will determine places 5 to 8 in the final standings.
- Stage 7: Final and Petit Final. The assignment of sides will be decided through a draw. The first team to score 3 points wins the Final; the first team to score 2 points wins the Petit Final.

### 5.2.2 In a knock-out series between two teams:

- (a) The teams shall alternate assigned ends for each match. The initial assigned end will be decided in accordance with SI 5.2.1. This changes RRS C4.1.
- (b) When the series has been decided, further matches between these two teams will not be sailed.
- (c) Teams will exchange boats after odd matches of the series.

## 6 SCHEDULE OF RACES

6.1 The total number of races scheduled including medal races, if any, is as follows:

<b>Event</b>	<b>Total Number of Races</b>	<b>Maximum Races per Day</b>
Men's Two Person Dinghy High Performance	16	4
Women's Keelboat Match Racing	206	No limit
All other Olympic Class Events	11	3
Paralympic Class Events	10	3

6.2 The daily race schedule and the scheduled time of the warning signal for the first race, or the attention signal for the first flight, is shown in SI Addendum E.

6.3 On the last day of racing, no warning or attention signal will be made after 1700.

6.4 Fleet racing:

6.4.1 Races not sailed on the scheduled day may be sailed on a following day at the discretion of the race committee.

6.4.2 For single fleet events, the opening series will take place on 25 – 29 January, and the medal race will take place on 30 January.

6.4.3 For split fleet events, the qualifying series will take place on 25 – 27 January, the final series will take place on 28 – 29 January, and the medal race will take place on 30 January. The Qualifying Series will be extended if four races have not been completed.

6.4.4 The warning signal for each succeeding race will be made as soon as practicable.

6.4.5 To alert boats that a race or sequence of races will begin soon, an orange flag will be displayed with one sound for at least four minutes before a warning signal is displayed.

6.5 Match racing:

6.5.1 The attention signal for each succeeding flight will be made as soon as practicable.

6.5.2 When a match cannot start at its intended time, the signals and starts of the following matches will remain as originally scheduled, leaving a blank start for the pair not starting. No starting sequence flags will be displayed for a blank start.

6.5.3 When, in a knock out series, a winner of a particular series has been determined, subsequent starts will be brought forward to eliminate blank starts. Competitors will be so advised verbally by an umpire.

6.5.4 Breakdown and time for repairs:

(a) Before the attention signal of a flight, or within two minutes of finishing, or within five minutes of changing into a new boat, whichever is later, a boat may display flag L to signal breakdown or damage to the boat, her sails or injury to her crew and request a delay to the next start. She shall proceed as soon as possible to close to leeward of the race committee starting boat and remain there, unless otherwise directed.

(b) The time allowed for repairs shall be at the discretion of the race committee.

(c) After the attention signal of a flight, a match will not be postponed or abandoned due to breakdown unless the breakdown signal was displayed as required by SI 6.10.3(a).

(d) Except when RRS 62.1(b) applies, failure to effect repairs in the time allowed, or breakdowns after the attention signal shall not be grounds for redress. This changes RRS 62.

## 7 CLASS FLAGS

Class flags will be class insignia on the following background:

<u>Event</u>	<u>Class</u>	<u>Background Colour</u>
Men's One Person Dinghy	Laser Standard	White
Women's One Person Dinghy	Laser Radial	Light Blue
Men's One Person Dinghy Heavy	Finn	White
Men's Two Person Dinghy	470 M	White
Women's Two Person Dinghy	470 W	Light Blue
Men's Two Person Dinghy High Performance	49er	White
Men's Keelboat	Star	White
Women's Keelboat Match Racing	Elliott 6M	White
Men's Windsurfer	RS:X M	White
Women's Windsurfer	RS:X W	Light Blue
One Person Paralympic	2.4 mR	White
Two Person Paralympic	SKUD18	White
Three Person Paralympic	Sonar	White

## 8 RACING AREAS

- 8.1 The racing areas are shown in SI Addendum B.
- 8.2 Events are assigned to racing areas as stated in SI Addendum E.
- 8.3 For the medal races, two racing areas will be used. Their locations will be posted on the official notice board.

## 9 THE COURSES

- 9.1 The diagrams in Addendum A show the courses, the course designations, the approximate angles between legs, the order in which marks are to be passed, and the side on which each mark is to be left.
- 9.2 For the Men's Two Person Dinghy High Performance event, Mark 1A will not be a mark of any course and will not be set.
- 9.3 For fleet racing, no later than the warning signal, the race committee signal boat will display the course designation and the approximate compass bearing of the first leg.
- 9.4 For fleet racing, courses will not be shortened. This changes RRS 32.
- 9.5 For match racing, RRS 32 is deleted and replaced with: 'After the starting signal the RC may abandon or shorten any match for any reason, after consulting with the match umpires when practical.'

## 10 MARKS

10.1 Marks 1, 2, 3, and 4, or associated gate marks, will be as follows:

Area	Color of Mark 1, 2, 3, & 4	Shape of Mark 1, 2, 3, & 4	Color of New Mark	Shape of New Mark	Color of Finish Mark	Shape of Finish Mark
Alpha	Yellow	Tetrahedron	Orange	Tetrahedron	Green	Tetrahedron
Bravo	Orange	Tetrahedron	Yellow	Tetrahedron	Orange	Tetrahedron
Charlie	Orange	Tetrahedron	Yellow	Tetrahedron	Green	Tetrahedron
Delta	Yellow	Tetrahedron	Yellow	Tetrahedron	Orange	Tetrahedron
Echo	Orange	Tetrahedron	Yellow	Tetrahedron	Orange	Tetrahedron
Fox	Yellow	Tetrahedron	Orange	Tetrahedron	Orange	Tetrahedron
Golf	Yellow	Tetrahedron	Orange	Tetrahedron	Green	Tetrahedron

10.2 Offset marks will be red spheres.

10.3 Marks S1, S2, and S3 will be yellow spheres.

10.4 Inflatable starting marks, when used, will be orange tetrahedrons.

## 11 THE START

11.1 Fleet races will be started by using RRS 26.

11.2 Match races will be started using RRS C3.1, changed so that the attention signal will be made 7 minutes before the first start.

11.3 The starting line will be between a staff displaying an orange flag on the starting mark at the starboard end and either (a) the course side of the port-end starting mark, or (b) a staff displaying an orange flag on the starting mark at the port end.

11.4 A buoy may be attached to the race committee starting boat anchor line just below keel depth. Boats shall not pass between this buoy and the race committee starting boat at any time. This buoy is part of the race committee starting boat ground tackle.

11.5 Boats whose warning signal has not been made shall avoid the starting area.

11.6 For fleet racing, a boat starting later than 4 minutes after her starting signal will be scored Did Not Start. This changes RRS A4 and A5.

## 12 CHANGE OF THE NEXT LEG OF THE COURSE

12.1 To change the next leg of the course, the race committee will lay a new mark (or move the finishing line) and remove the original mark as soon as practicable. When in a subsequent change a new mark is replaced, it will be replaced by an original mark.

### 12.2 For Match Racing Only:

12.2.1 Changes to the course will be made by laying a new Mark 1.

12.2.2 RRS 33 and Race Signals are changed as follows

(a) Flag C and a coloured flag or board means: 'The windward mark has been moved or replaced. Sail to a mark the same colour as the flag or board.'

(b) When a change of course after starting only affects some matches these will be designated by the appropriate numeral pennant.

12.2.3 Signaling vessel

(a) When a change of course is made for the first leg, the signal will be displayed from the race committee starting boat with the preparatory signal for each match affected. The preparatory signal will be followed by a series of repetitive sound signals.

(b) When a change of course is signalled after the first leg it will be displayed from a boat in the vicinity of mark L.

### 13 THE FINISH

- 13.1 For all courses except W, the finishing line will be between a staff displaying an orange flag on the finishing mark on the port end and the course side of the finishing mark described in SI 12.4 on the starboard end.
- 13.2 For course W, the finishing line will be between a staff displaying an orange flag on the finishing mark on the starboard end and the course side of the finishing mark described in SI 12.4 on the port end.

### 14 PENALTY SYSTEM

- 14.1 For fleet racing, Appendix P, Special Procedures for Rule 42, will apply.
- 14.2 For match racing, RRS C8.6 is changed to replace 'a half-point' with 'up to one-point' in the first sentence and replace 'half-point' with 'one point' thereafter..
- 14.3 For the Men's Two Person Dinghy High Performance and Two Person Paralympic events, RRS 44.1 and RRS P2.1 are changed so that the Two-Turns Penalty is replaced by the One-Turn Penalty.

### 15 TIME LIMITS AND TARGET TIMES

- 15.1 Except for medal races, time limits and target times are as follows:

<u>Class</u>	<u>Time Limit</u>	<u>Mark 1 Time Limit</u>	<u>Finish Window</u>	<u>Target Time</u>
470, Laser Radial, Laser Standard	90	30	20	60
49er	50	20	10	30
Elliott 6M			5	16 to 18
Finn, Star	115	40	25	75
RS:X	50	20	10	30 to 35
Paralympic Events	90	30	20	60

- 15.2 Time limits and target times for medal races are as follows:

<u>Class</u>	<u>Time Limit</u>	<u>Mark 1 Time Limit</u>	<u>Finish Window</u>	<u>Target Time</u>
RS:X	50	20	None	20
All other classes	50	30	None	30

- 15.3 If no boat has passed Mark 1 within the Mark 1 Time Limit the race will be abandoned.
- 15.4 Boats failing to finish within the time stated in the Finish Window after the first boat sails the course and finishes will be scored Did Not Finish. This changes RRS 35, A4 and A5.

### 16 PROTESTS AND REQUESTS FOR REDRESS

- 16.1 Fleet racing:
- 16.1.1 Protest forms are available at the race office, located at the US Sailing Center, 2476 S. Bayshore Drive, Miami FL. Protests and requests for redress or reopening shall be delivered there within the appropriate time limit.
- 16.1.2 For each fleet, the protest time limit is 90 minutes after the last boat has finished the last race of the day.

- 16.1.3 Notices will be posted within 30 minutes of the protest time limit to inform competitors of hearings in which they are parties or named as witnesses. Hearings will be held in the protest room, located at the US Sailing Center beginning at the time posted. Hearings may be scheduled to begin up to 30 minutes before the end of protest time
  - 16.1.4 Notices of protests by the race committee or protest committee will be posted to inform boats under RRS 61.1(b).
  - 16.1.5 A list of boats that have been penalized under Appendix P for breaking RRS 42 will be posted.
  - 16.1.6 Breaches of SIs 2 and 18 will not be grounds for a protest by a boat. This changes RRS 60.1(a).
  - 16.1.7 Penalties for breaches of SIs 2, 11.5, 18, 23, 24, 25, and 27, or for breaches of class rules, are at the discretion of the protest committee.
    - 16.1.8 On the last day of the qualifying series or opening series, or on the last scheduled day of racing, a request for reopening a hearing shall be delivered
      - (a) within the protest time limit if the requesting party was informed of the decision on the previous day, or
      - (b) no later than 30 minutes after the requesting party was informed of the decision on that day.
- This changes RRS 66.

## **17 SCORING**

### **17.1 Fleet racing:**

- 17.1.1 The Low Point System of Appendix A will apply. RRS B8 is deleted.
- 17.1.2 When fewer than 5 opening series races have been completed, a boat's series score will be the total of her race scores.
- 17.1.3 When 5 or more opening series races have been completed, a boat's series score will be the total of her race scores excluding her worst score. However, the score from the medal race will not be excluded.
- 17.1.4 The scoring abbreviation for a discretionary penalty imposed under SI 19.6 will be DPI.
- 17.1.5 To request correction of an alleged error in posted race or series results, a boat may complete a scoring enquiry form available at the race office.

### **17.2 Single Fleet Opening Series:**

Three races, including the medal race, if any, are required to be completed to constitute a regatta.

### **17.3 Split Fleet Opening Series:**

- 17.3.1 Three races are required to be completed to constitute a regatta. These races consist of those qualifying races completed by all fleets, any final races completed by the Gold fleet, and the medal race, if any.
- 17.3.2 For the qualifying series, RRS A4.2 is changed so that the scores are based on the number of boats assigned to the largest fleet.
- 17.3.3 If at the end of the qualifying series some boats have more race scores than others, scores for the most recent races will be excluded so that all boats have the same number of race scores. For assignment of boats to the Gold fleet, a boat's qualifying series score will be the total of her race scores excluding her worst score.
- 17.3.4 Final series fleets will be scored separately and different final series fleets need not have completed the same number of final races.
- 17.3.5 For final ranking, boats assigned to the Gold fleet will be ranked higher in the regatta than the boats assigned to the Silver fleet.

#### 17.4 Medal Race:

- 17.4.1 The boats assigned to compete in the medal race will be ranked highest in the regatta except for a boat disqualified from the medal race under RRS 5 or 69.
- 17.4.2 RRS A4.1 is changed so that the points are doubled, and RRS A4.2 is changed so that the scores are based on the number of boats assigned to compete in that race.
- 17.4.3 For boats assigned to compete in the medal race, ties in the regatta score are broken by the medal race score. This changes RRS A8. For boats with the same points score in the medal race, ties in the regatta score are broken applying RRS A8 to the opening series scores.
- 17.4.4 A boat assigned to compete in the medal race shall make a genuine effort to start, sail the course and finish. The penalty for this breach will be ranking the boat tenth in the regatta. If there are two such boats, they will be ranked ninth and tenth, in order of their opening-series ranks, and so on. This changes RRS A2.

#### 17.5 Match racing:

- 17.5.1 The scoring system of RRS Appendix C10 and C11 will apply.
- 17.5.2 RRS Appendix C10.3 is changed to add: 'When a single round robin is terminated before completion, or a multiple round robin is terminated during the first round robin, the highest score shall be determined as the average points scored per match sailed by each competitor, unless one or more competitor has completed less than one third of the scheduled matches when the entire round robin shall be disregarded and if necessary the event declared void.'

### 18 SAFETY REGULATIONS

- 18.1 The race committee will protest a boat for a breach of these instructions.
- 18.2 Competitors are advised to wear personal flotation devices at all times while afloat.
- 18.3 Boats not leaving the harbour for a scheduled race shall promptly notify the Race Office.
- 18.4 On arrival in the racing area each day, a boat shall sail past the stern of the race committee signal boat on starboard tack and hail her sail or bow number until acknowledged by the race committee.
- 18.5 A boat that retires from racing shall notify the race committee before leaving the racing area, or if that is not possible, shall notify the race office as soon as possible after returning ashore.
- 18.6 Boats retiring from racing in accordance with SI 18.6 shall complete a retirement declaration form at the race office before the protest time limit.
- 18.7 In accordance with SI 24, Berthing, boats shall return to and remain in their assigned berths.
- 18.8 When the race committee displays flag V with repetitive sounds, all official and support boats shall monitor the race committee VHF radio channel shown in Addendum B for search and rescue instructions.

### 19 REPLACEMENT OF CREW OR EQUIPMENT

- 19.1 Substitution of competitors will not be allowed without prior written approval of the race committee and shall comply with any restrictions in the Notice of Race.
- 19.2 Substitution of damaged or lost equipment will not be allowed unless approved by the race committee. Requests for substitution shall be made to the race committee at the first reasonable opportunity.

### 20 EQUIPMENT AND MEASUREMENT CHECKS

- 20.1 Details of pre-first race equipment inspection, location and schedules will be posted on the official notice board.
- 20.2 A boat or equipment may be inspected at any time for compliance with the class rules and sailing instructions. When instructed by an event equipment inspector the boat shall proceed immediately to a designated area for inspection.

## **21 OFFICIAL BOATS**

21.1 Official boats will be marked as follows:

Race Committee - Blue Race Committee Flag

Jury - White flag with the word JURY in blue.

First aid/medical – White flag with a red cross

Media - Green Rolex Flag

Organisers - Pink Flag

21.2 Action by judge, TV and Press boats or helicopters shall not be grounds for requesting redress by a boat. This changes RRS 60.1(b).

## **22 SUPPORT BOATS**

22.1 Support boats with team leaders, coaches, and other support personnel shall stay outside areas where boats are racing from the time of the preparatory signal for the first fleet to start until all boats have finished or the race committee signals a postponement, general recall, or abandonment.

22.2 Support boats shall be marked in compliance with NoR 15.223 **TRASH DISPOSAL**

As sailors, we seek to protect and restore our oceans and coastal waters. Boats shall not put trash in the water. Trash may be placed aboard support and race committee boats.

## **24 BERTHING and BOAT PARK**

Boats shall be kept in their assigned places in the boat park or harbour.

## **25 HAUL-OUT RESTRICTIONS**

Sonars shall not be hauled out during the regatta except with and according to the terms of prior written permission of the race committee.

## **26 DIVING EQUIPMENT AND PLASTIC POOLS**

Underwater breathing apparatus and plastic pools or their equivalent shall not be used around keel boats between the preparatory signal of the first race and the end of the regatta.

## **27 RADIO COMMUNICATION**

A boat shall neither make nor receive radio transmissions, text messages or cellular phone calls while racing, except in an emergency or when using equipment provided by the race committee.

## **28 PRIZES**

Medals will be awarded to the top 3 boats in each event. The Organising Authority may alter prizes if less than 10 boats are entered in an event.

## **29 DISCLAIMER OF LIABILITY**

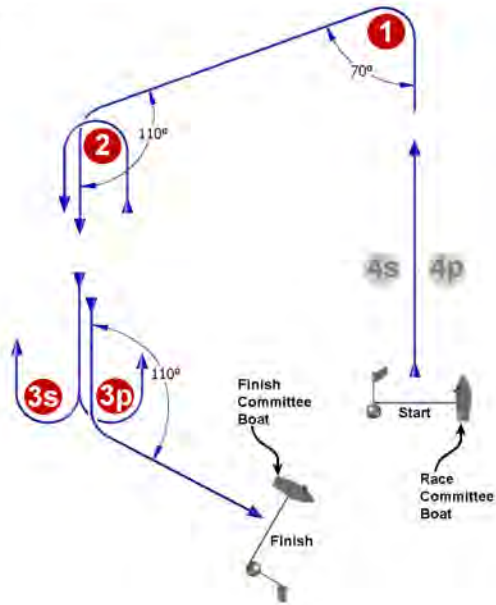
Competitors participate in the regatta entirely at their own risk. See RRS 4, Decision to Race. Neither the organizing authority nor ISAF will accept any liability for material damage or personal injury or death sustained in conjunction with or prior to, during, or after the regatta.

## **30 INSURANCE**

Each participating boat shall be insured with valid third-party liability insurance with a minimum cover of US\$300,000.00 per event or the equivalent.

# Addendum A – Courses (SI 9)

**O**



Course: Outer Trapezoid

Signal	Marking Rounding Order
O2	Start - 1 - 2 - 3s/3p - 2 - 3p - Finish
O3	Start - 1 - 2 - 3s/3p - 2 - 3s/3p - 2 - 3p - Finish
O4	Start - 1 - 2 - 3s/3p - 2 - 3s/3p - 2 - 3s/3p - 2 - 3p - Finish

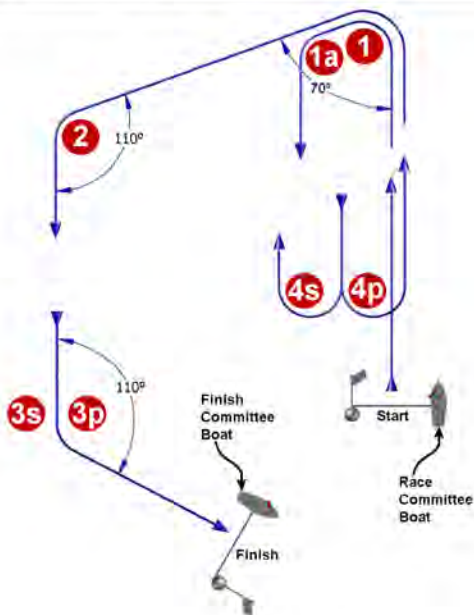
**W**



Course: Windward/Leeward With Finish To Windward

Signal	Marking Rounding Order
W2	Start - 1 - 1a - 4s/4p - Finish
W3	Start - 1 - 1a - 4s/4p - 1 - 1a - 4s/4p - Finish
W4	Start - 1 - 1a - 4s/4p - 1 - 1a - 4s/4p - 1 - 1a - 4s/4p - Finish

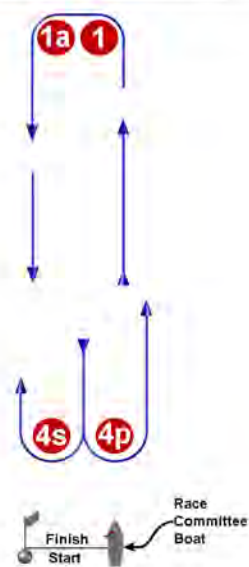
**I**



Course: Inner Trapezoid

Signal	Marking Rounding Order
I2	Start - 1 - 1a - 4s/4p - 1 - 2 - 3p - Finish
I3	Start - 1 - 1a - 4s/4p - 1 - 1a - 4s/4p - 1 - 2 - 3p - Finish
I4	Start - 1 - 1a - 4s/4p - 1 - 1a - 4s/4p - 1 - 1a - 4s/4p - 1 - 2 - 3p - Finish

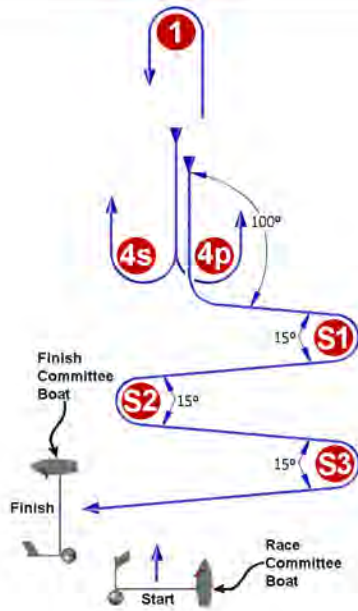
**L**



Course: Windward/Leeward With Finish To Leeward

Signal	Marking Rounding Order
L2	Start - 1 - 1a - 4s/4p - 1 - 1a - Finish
L3	Start - 1 - 1a - 4s/4p - 1 - 1a - 4s/4p - 1 - 1a - Finish
L4	Start - 1 - 1a - 4s/4p - 1 - 1a - 4s/4p - 1 - 1a - 4s/4p - 1 - 1a - Finish

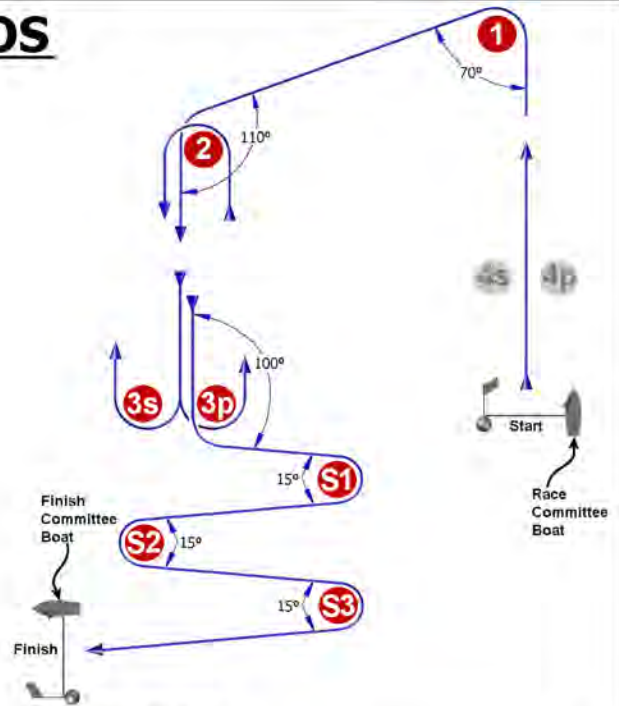
# LS



Course: Windward/Leeward With Slalom Finish

Signal	Marking Rounding Order
LS2	Start - 1 - 4s/4p - S1 - S2 - S3 - Finish
LS3	Start - 1 - 4s/4p - 1 - 4p - S1 - S2 - S3 - Finish
LS4	Start - 1 - 4s/4p - 1 - 4s/4p - 1 - 4p - S1 - S2 - S3 - Finish

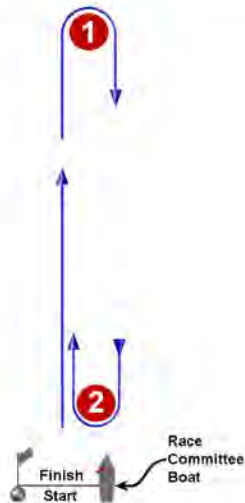
# OS



Course: Outer Slalom

Signal	Marking Rounding Order
OS2	Start - 1 - 2 - 3s/3p - 2 - 3p - S1 - S2 - S3 - Finish
OS3	Start - 1 - 2 - 3s/3p - 2 - 3s/3p - 2 - 3p - S1 - S2 - S3 - Finish
OS4	Start - 1 - 2 - 3s/3p - 2 - 3s/3p - 2 - 3s/3p - 2 - 3p - S1 - S2 - S3 - Finish

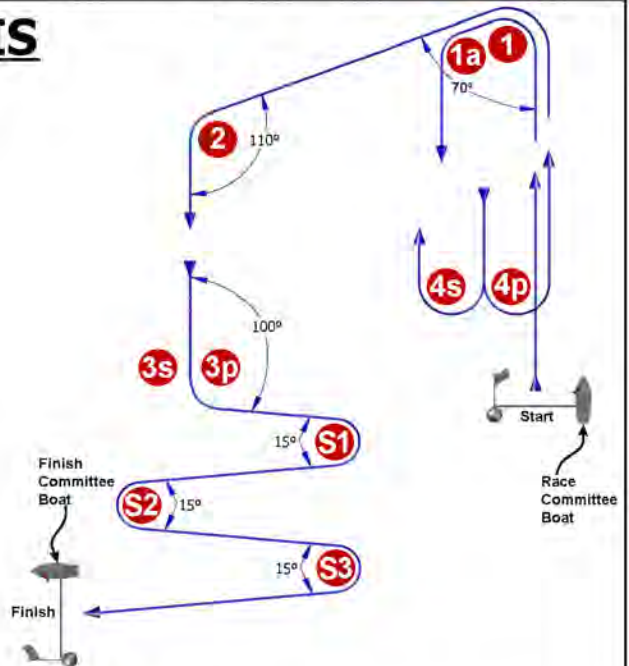
# M



Course: Windward/Leeward With Finish To Leeward

Signal	Marking Rounding Order
M1	Start - 1 - Finish
M2	Start - 1 - 2 - 1 - Finish
M3	Start - 1 - 2 - 1 - 2 - 1 - Finish
M4	Start - 1 - 2 - 1 - 2 - 1 - 2 - 1 - Finish

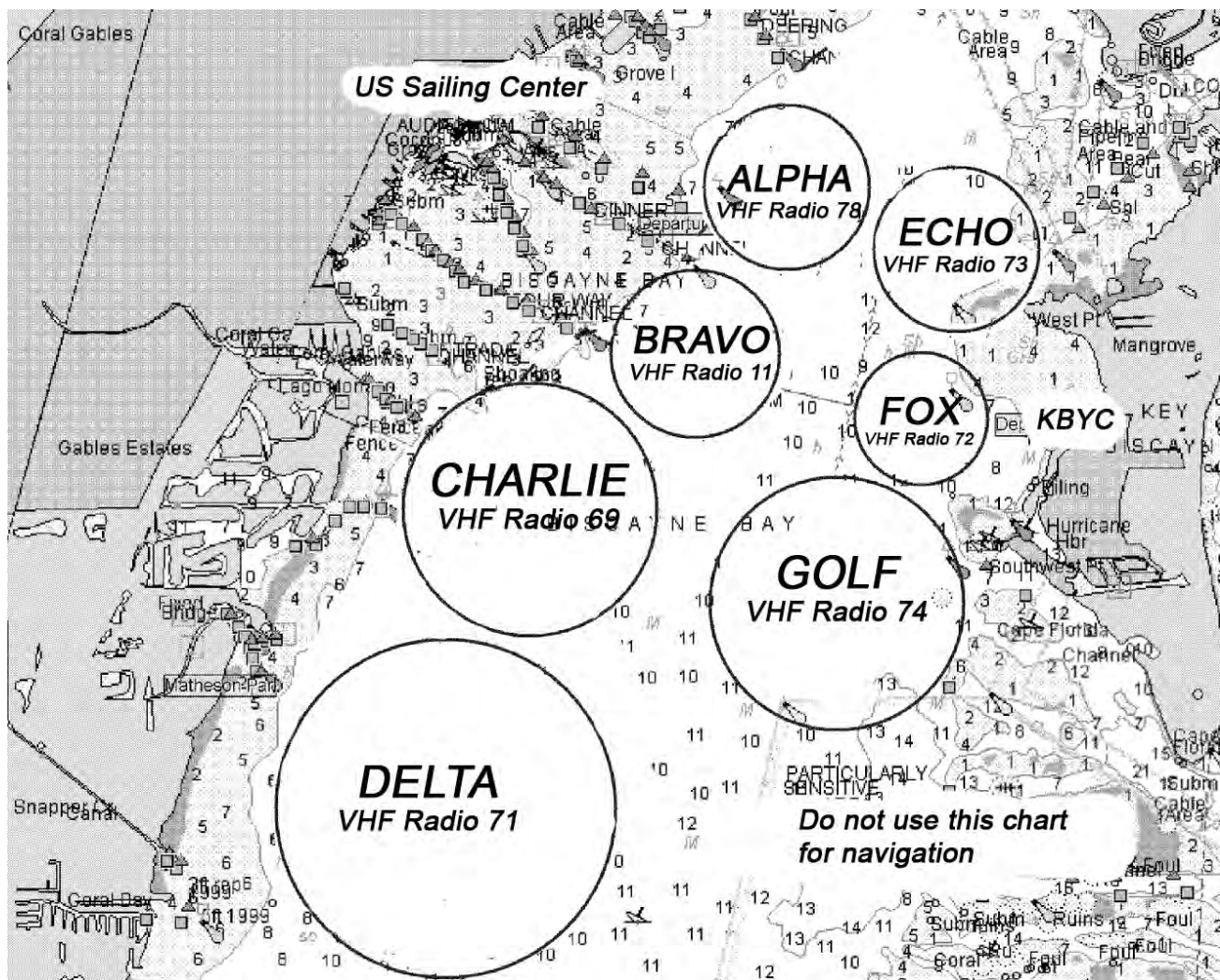
# IS



Course: Inner Slalom

Signal	Marking Rounding Order
IS2	Start - 1 - 1a - 4s/4p - 1 - 2 - 3p - S1 - S2 - S3 - Finish
IS3	Start - 1 - 1a - 4s/4p - 1 - 1a - 4s/4p - 1 - 2 - 3p - S1 - S2 - S3 - Finish
IS4	Start - 1 - 1a - 4s/4p - 1 - 1a - 4s/4p - 1 - 1a - 4s/4p - 1 - 2 - 3p - S1 - S2 - S3 - Finish

## Addendum B – Racing Areas (SI 8)



### COURSE ASSIGNMENTS:

ALPHA – Windsurfer, Men and Women

BRAVO – All Paralympic Events

CHARLIE – Two Person Dinghy Men & Women, One Person Dinghy Heavy

DELTA – Men's Keelboat

ECHO – Men's Two Person Dinghy, High Performance

FOX – Women's Match Racing

GOLF – Men's One Person Dinghy, Women's One Person Dinghy

# Addendum C – Handling Boats

## 1 GENERAL

While all reasonable steps are taken to equalise the boats variations will not be grounds for redress. This changes RRS 62.

## 2 PROHIBITED ITEMS and ACTIONS

Except in an emergency or in order to prevent damage or injury, or when directed by an umpire otherwise, the following are prohibited.

- 2.1 Any additions, omissions or alterations to the equipment supplied.
- 2.2 The use of any equipment for a purpose other than that intended or specifically permitted.
- 2.3 The replacement of any equipment without the sanction of the RC.
- 2.4 Sailing the boat in a manner that it is reasonable to predict that significant further damage would result.
- 2.5 Moving equipment from its normal stowage position except when being used.
- 2.6 Boarding a boat without prior permission.
- 2.7 Taking a boat from its berth or mooring without having paid the required damage deposit or having permission from the RC, or, on race days, while 'AP' is displayed ashore.
- 2.8 Hauling out a boat or cleaning surfaces below the waterline.
- 2.9 Using a flattener as a reef.
- 2.10 Attaching lines to the fabric of spinnakers.
- 2.11 Perforating sails, even to attach tell tales.
- 2.12 Radio transmission (including mobile telephones), except to report damage or in response to a request from the RC.
- 2.13 Adjusting or altering the tension of standing rigging.
- 2.14 The use of electronic instruments other than compass and watches.
- 2.15 Using the spinnaker pole to wing out the foresail.
- 2.16 Marking directly on the hull or deck with permanent ink.
- 2.17 After the starting signal and while sailing close hauled for more than a few seconds, the main boom position shall be controlled only by using the mainsheet as it exits the block on the cockpit floor, and the vang.
- 2.18 The use of the shrouds (including any inner shrouds) above the lower bottle screw (turnbuckle) to facilitate tacking or gybing, or to aid the projection of a crew member outboard is prohibited.

## 3 PERMITTED ITEMS and ACTIONS

The following are permitted.

- 3.1 Taking on board the following equipment:
  - (a) basic hand tools
  - (b) adhesive tape
  - (c) line (elastic or otherwise of 4 mm diameter or less)
  - (d) marking pens
  - (e) tell tale material
  - (f) watch, timers and hand held compass
  - (g) shackles and clevice pins
  - (h) velcro tape
  - (i) spare flags
- 3.2 Using the items in 3.1 to:
  - (a) prevent fouling of lines, sails and sheets
  - (b) attach tell tales
  - (c) prevent sails being damaged or falling overboard
  - (d) mark control settings
  - (e) make minor repairs and permitted adjustments
  - (f) make signals as per Appendix C6
- 3.3 Fixing a spinnaker sheet catcher at the bow, providing that it does not extend the length of the boat more than 100 mm and does not require any repair after removal.
- 3.4 Fixing a watch or timer to the mast providing that it does not require any repair after removal.

## 4 MANDATORY ITEMS and ACTIONS

The following are mandatory.

- 4.1 The completion of a written damage report before leaving a boat and submitting it to the RC, even if no damage or loss is recorded. Reports shall include any evidence of matters which could cause damage or disadvantage to the boat in future matches.
- 4.2 At the end of each sailing day:

- (a) folding, bagging and placement of the sails as directed
- (b) leaving the boat in the same state of cleanliness as when first boarded that day
- 4.3 At the end of the final day for a particular boat, cleaning the boat (cabin and decks), removing all trash and removing all tape and marks.
- 4.4 Any request to alter, in any way, the equipment on a boat shall be in writing and worded to permit a yes/no answer.
- 4.5 Complying with any regulations, including speed restrictions and navigation marks, while leaving or returning to the berth or mooring.
- 4.6 Blank.
- 4.7 A breach of items 4.2 and 4.3 will be considered as damage and the cost of rectification will be deducted from the damage deposit.
- 4.8 When towing, the tow line should be attached to the forward pad eye (not the mast). If multiple boats on one tow, the after attachment should run through the small pad eye on the transom and attached to the pad eye just aft of the main sheet track.

## **Addendum D – Not Used**



# ADDENDUM Q

## UMPIRED FLEET RACING

*Under rule 86.2 and Regulation 31.1.3, the ISAF has approved the use of these sailing instructions as an addendum to the sailing instructions in World Championship Grade, Grade 1 and Grade C1 events in 2009, for umpired fleet racing in the last race of each series for the Olympic classes. Similar events are also encouraged to use the addendum. This can be done under rule 86.3 if the national authority prescribes that rule changes are allowed for the purpose of development and testing. Please note that the national authority may prescribe that such changes require its approval. Events that use this addendum are requested to provide feedback to the ISAF to support further development.*

*Races may be sailed under the sailing instructions in this addendum only if the notice of race so states and the addendum is included in the sailing instructions.*

*Use of this addendum is recommended for races in which about ten one-design boats compete with umpires present. There should be one umpire boat for every three or four boats in the fleet.*

These sailing instructions change the definitions Finish, Proper Course and Protest, and rules 20.1, 28.1, 44.1, 60, 61, 62, 63, 64.1, 65, 66, 70, 78.3 and B7.

### Q1 CHANGES TO RACING RULES

#### Q1.1 Changes to the Definitions and the Rules of Part 2

(a) The definition Finish is changed to

A boat *finishes* when any part of her hull, or crew or equipment in normal position, crosses the finishing line in the direction of the course from the last *mark*, either for the first time or after completing any penalties or, under rule 28.1, after correcting an error made at the finishing line.

(b) Add to the definition Proper Course: 'A boat taking a penalty or manoeuvring to take a penalty is not sailing a *proper course*.'

(c) When rule 20.1 applies, the following arm signals are required in addition to the hails:

(1) for 'Room to tack', repeatedly and clearly pointing to windward; and

(2) for 'You tack', repeatedly and clearly pointing at the other boat and waving the arm to windward.

This instruction does not apply to boards.

#### Q1.2 Changes to Rules Involving Protests, Requests for Redress, Penalties and Exoneration

(a) The first sentence of rule 44.1 is replaced with: 'A boat may take a One-Turn Penalty when she may have broken a rule of Part 2 (except rule 14 when she has caused damage or injury) or rule 31 while *racing*.'

(b) Rule 60.1 is replaced with 'A boat may protest another boat or request redress provided she complies with instructions Q2.1, Q2.4, Q5.1, Q5.2, Q5.3 and Q5.4.'

(c) The third sentence of rule 61.1(a) and all of rule 61.1(a)(2) are deleted. Rule B7 is deleted.

(d) Rule 64.1(c) is changed so that the provision for exonerating a boat may be applied by the umpires without a hearing, and it takes precedence over any conflicting instruction of this addendum.

### Q2 PROTESTS AND REQUESTS FOR REDRESS BY BOATS

**Q2.1** While racing, a boat may protest another boat under a rule of Part 2, except rule 14, but only for an incident in which she was involved, or under rule 31. To do so she shall hail 'Protest' and conspicuously display a red flag at the first reasonable opportunity for each. She shall remove the flag before, or at the first reasonable opportunity after, a boat involved in the incident has taken a voluntary penalty or after an umpire's decision. However, a board need not display a red flag.

**Q2.2** A boat that protests as provided in instruction Q2.1 is not entitled to a hearing. Instead, a boat involved in the incident may acknowledge breaking a rule by promptly taking a One-Turn Penalty. If no boat takes a penalty voluntarily, an umpire will signal a decision as provided in instruction Q3.1.

**Q2.3** At the finishing line the race committee will display each boat's sail number and her finishing place or scoring abbreviation. After this has been done for all boats, the race committee will promptly display flag B with one sound. Two minutes later flag B will be removed with one sound.

**Q2.4** A boat intending to

(a) protest another boat under a rule other than instruction Q3.2 or Q4.2(a), rule 42, 44 or a rule listed in instruction Q2.1,

(b) protest another boat under rule 14 if there was contact that caused damage or injury, or

(c) request redress

shall hail the race committee before or during the display of flag B. The same time limit applies to consideration of redress under instructions Q5.2 and Q5.3 and to protests under instructions Q5.7 and Q5.8. The protest committee may extend the time limit if there is good reason to do so.

**Q2.5** The race committee will promptly inform the protest committee about any protests or requests for redress made under instruction Q2.4.

### Q3 UMPIRE SIGNALS AND IMPOSED PENALTIES

**Q3.1** An umpire will signal a decision as follows:

(a) A green flag or a green and white flag with one long sound means 'No penalty.'

(b) A red flag with one long sound means 'One or more boats are given an imposed penalty.' The umpire will hail or signal to identify each boat to be penalized.

(c) A black flag with one long sound means 'A boat is disqualified.' The umpire will hail or signal to identify the boat disqualified.

**Q3.2** (a) A boat given an imposed penalty under instruction Q3.1(b) shall take a One-Turn Penalty.

(b) A boat disqualified under instruction Q3.1(c) shall promptly leave the course area. 3

#### **Q4 PENALTIES AND PROTESTS INITIATED BY AN UMPIRE; ROUNDING OR PASSING MARKS**

**Q4.1** When a boat

(a) breaks rule 31 and does not take a penalty,

(b) gains an advantage despite taking a penalty,

(c) deliberately breaks a rule,

(d) commits a breach of sportsmanship, or

(e) fails to comply with instruction Q3.2 or to take a penalty when required to do so by an umpire,

an umpire may penalize her without a protest by another boat. The umpire may impose one or more penalties to be taken under rule 44, each signalled by displaying a red flag and hailing the boat, or disqualify her under instruction Q3.1(c), or report the incident to the protest committee for further action.

**Q4.2** (a) A boat shall not round or pass a mark on the wrong side. If she does so, she may correct her error as provided in rule 28.1 only if she does so before she rounds or passes the next mark or finishes.

(b) When a boat breaks instruction Q4.2(a) and fails to correct her error before rounding or passing the next mark or finishing, an umpire may disqualify her under instruction Q3.1(c).

**Q4.3** An umpire who decides, based on his own observation or a report received from any source, that a boat may have broken a rule, other than instruction Q3.2 or Q4.2(a) or a rule listed in instruction Q2.1, may inform the protest committee for its action under rule 60.3. However, he will not inform the protest committee of an alleged breach of rule 14 unless there is damage or injury.

#### **Q5 PROTESTS; REQUESTS FOR REDRESS OR REOPENING; APPEALS; OTHER PROCEEDINGS**

**Q5.1** No proceedings of any kind may be taken in relation to any action or non-action by an umpire, except as permitted in instruction Q5.2.

**Q5.2** (a) A boat may not base a request for redress on a claim that an action by an official boat or helicopter was improper. The protest committee may decide to consider giving redress in such circumstances if it believes that an official boat or helicopter, including an umpire boat, may have seriously interfered with a competing boat. The race committee may request the protest committee to consider this.

(b) A boat may not base a request for redress on a claim that an action by an umpire acting under Appendix P was incorrect. The protest committee may decide to consider giving redress in such circumstances, but only to the extent permitted by Appendix P.

**Q5.3** A boat may not request redress under rule 62.1(a). The protest committee may decide to consider giving redress under that rule if it believes that an error may have been made. The race committee may request the protest committee to consider this.

**Q5.4** A boat may not base an appeal on an alleged improper action, omission or decision of the umpires or the protest committee. In rule 66 the third sentence is changed to 'A *party* to the hearing may not ask for a reopening.'

**Q5.5** (a) Protests and requests for redress need not be in writing. 4

(b) The protest committee may take evidence and conduct the hearing in any way it considers appropriate and may communicate its decision orally.

(c) If the protest committee decides that a breach of a rule has had no effect on the outcome of the race, it may impose a penalty of points or fraction of points or make another arrangement it decides is equitable, which may be to impose no penalty.

**Q5.6** The race committee will not protest a boat.

**Q5.7** The event measurement committee, or, when no event measurement committee is appointed, the event measurer or equipment inspector for the event, may protest a boat for an alleged breach of a measurement rule or rule 43.1(a) or 43.1(b).

**Q5.8** The protest committee may protest a boat under rule 60.3. However, it will not protest a boat for breaking instruction Q3.2 or Q4.2(a), a rule listed in instruction Q2.1, or rule 14 unless there is damage or injury.