



SPLIT OLYMPIC SAILING WEEK 2010

March 17th – 21st 2010

SC LABUD, SPLIT

SAILING INSTRUCTIONS

1. RULES

- 1.1. The regatta will be governed by the rules as defined in Racing Rules of Sailing 2009 – 2012. Prescriptions of Croatian Sailing Federation will not apply.
- 1.2. ISAF eligibility code (ISAF Regulation 19) and class eligibility requirements apply.
- 1.3. Boats shall not discharge trash into the water.

2. NOTICES TO COMPETITORS

- 2.1. Notices to competitors will be posted on the official notice board at the SC Labud Club house.
- 2.2. The regatta office is located at the SC Labud Club house.

3. CHANGES TO SAILING INSTRUCTIONS

- 3.1. Any change to the sailing instructions will be posted before 09:00 on the day the change will take effect, except that any change in the schedule of races will be posted by 20:00 hrs on the day before the change will take effect.

4. SIGNALS MADE ASHORE

- 4.1. Signals made ashore will be displayed with the applicable class flag(s) from the flagpole in front of SC Labud club house. If no class flag is displayed, the signal will apply to all classes.
- 4.2. Flag D with one sound means 'The warning signal will be made not less than 60 minutes after flag D is displayed. Boats are requested not to leave the harbour until this signal is made. Flag D over B or Flag D over C refers to initial sailing area as defined in attachment A.
- 4.3. When flag Y is displayed ashore, rule 40 applies at all times while afloat. This changes the Part 4 preamble.

5. SCHEDULE OF RACES

- 5.1. Dates of racing are from March 18th till March 21st 2010.
- 5.2. Number of races
Two races per day are scheduled for each class.
One extra race per day may be sailed, provided that no class becomes more than one race ahead of schedule and the change is made according to instruction 3.
- 5.3. The scheduled time of the warning signal for the first race is 13:00 on March 18th 2010. The scheduled time of the warning signal for the first race is 11:00 on March 19th till March 20th 2010. The scheduled time of the warning signal for the first race is 11:00 on March 21st.
- 5.4. After a long postponement, to alert boats that a race or sequence of races will begin soon, an orange flag will be displayed with one sound for at least four minutes before a warning signal is displayed.
- 5.5. On the last day of the regatta no warning signal will be made after 14:00 hrs.

6. CLASS FLAGS

Class	Class flag
FINN	class logo (insignia) on a white background
470 M & W	class logo (insignia) on a white background
LASER	class logo (insignia) on a white background
LASER RADIAL M & W	class logo (insignia) on a red background
RS X	class logo (insignia) on a white background

7. RACING AREAS

7.1. Attachment A shows the location of the racing areas.

8. THE COURSES

8.1. The diagrams in SI Attachment C – Courses (SI 8) show the courses and course designations, including the approximate angles between legs, the order in which marks are to be passed, and the side on which each mark is to be left.

8.2. The course designation and approximate compass bearing to the first mark will be displayed on board on the race committee signal boat no later than the warning signal for each class.

9. MARKS

9.1. Marks will be as shown below:

Marks 1, 2, Marks 3,3 a, Finish mark	Marks 4, 4a	Finish Mark RS x	Replacement marks (1 and 2 only)
Red cylindrical buoys	Red spherical buoys	Orange spherical mark	Red conical marks

10. THE START

10.1. Races will be started by using rule 26.

10.2. The starting line will be between staffs displaying an orange flag on the race committee boats.

10.3. During a starting sequence, boats whose warning signal has not been made shall avoid the starting area.

10.4. A boat starting later than 4 minutes after her starting signal will be scored Did Not Start. This changes rules 63.1, A4, and A5.

11. CHANGE OF THE NEXT LEG OF THE COURSE

11.1. Changes of the next leg of the course will be signaled in accordance with rule 33. To change the next leg of the course towards mark 1 or mark 2, the race committee will lay a new mark and remove the original mark as soon as practicable. When in a subsequent change a new mark is replaced, it will be replaced by an original mark.

11.2. To change the next leg of the course towards the gate or finish line, the race committee will move the original mark (or the finishing line) to a new position.

12. THE FINISH

The finishing line will be between a staff displaying an orange flag on a race committee boat and the course side of the finishing mark.

13. PENALTY SYSTEM

13.1. Rules 44.1 and 44.2 will apply.

13.2. Appendix P, Immediate Penalties for Breaking Rule 42, will apply.

13.3. Rule 42 Penalties:

13.3.1. The race committee may display flag O (Oskar) with the warning signal to signal that pumping, rocking and ooching are allowed as specified in the class rules.

13.3.2. After the starting signal, the race committee may display flag O (Oskar) with repetitive sounds at any rounding mark to signal that pumping, rocking and ooching are allowed as specified in the class rules. This instruction applies to a boat after she has passed the mark.

13.3.3. If the race committee has acted under instruction 13.3.1 or 13.3.2 and the wind speed becomes less than the limit specified in the class rules, the race committee may display flag R (Romeo) with repetitive sounds at any rounding mark to signal that rule 42, as changed by the class rules, applies. This instruction applies to a boat after she has passed the mark.

13.3.4. This changes Finn class rule C1.1 (1).

14. TIME LIMITS

14.1. Time limits are stated in SI Attachment B

- 14.2. If no boat has passed Mark 1 for the first time within the Mark 1 time limit shown in Attachment B the race will be abandoned.
- 14.3. Boats that fail to finish within the time labeled as "finish window" in Attachment B after the first boat in their event sails the course and finishes will be scored Did Not Finish. This changes rules 35, A4, and A5.

15. PROTESTS AND REQUESTS FOR REDRESS

- 15.1. Protest forms are available at the jury office at the SC Labud. Protests shall be delivered there within the protest time limit.
- 15.2. For each class, the protest time limit is 60 minutes after the last boat has finished the last race of the day.
- 15.3. Notices will be posted within 30 minutes of the protest time limit to inform competitors of hearings in which they are parties or named as witnesses. Hearings will be held at the SC Labud.
- 15.4. Notices of protests by the race committee or protest committee will be posted to inform boats under rule 61.1(b).
- 15.5. A breaches of SI 10.3, 17, 18, 20 or 21 will not be grounds for a protest by a boat. This changes rule 60.1(a). Penalties for these breaches may be less than disqualification if the jury so decides. The scoring abbreviation for a discretionary penalty imposed under this instruction will be DPI.
- 15.6. On the last day of the regatta a request for reopening a hearing shall be delivered as follows.:
 - (a) within the protest time limit if the requesting party was informed of the decision on the previous day;
 - (b) no later than 30 minutes after the requesting party was informed of the decision on that day.This changes rule 66.
- 15.7. On the last scheduled day of racing a request for redress based on a jury decision shall be delivered no later than 30 minutes after the decision was posted. This changes rule 62.2.
- 15.8. Decisions of the jury will be final as provided in rule 70.5.

16. SCORING

- 16.1. The Low-Point Scoring System of rule Appendix A as changed below will apply.
- 16.2. Four races are required to be completed to constitute a series.
- 16.3. When fewer than 5 races have been completed in any series, a boat's series score will be the total of her race scores. When 5 or more races have been completed, a boat's series score will be the total of her race scores excluding her worst score.

17. SAFETY REGULATIONS

- 17.1. Competitors in single-handed events shall wear adequate personal buoyancy while on the water, other than for brief periods while adding or removing clothing.
- 17.2. A boat requesting assistance should attempt to signal by waving an extended arm.
- 17.3. A boat that retires from a race shall notify the race committee signal vessel before leaving the course, or when that is not possible, she shall notify the regatta office as soon as practicable after she returns to the harbor.
- 17.4. Boats that are not leaving the harbor to race shall inform the regatta office prior to the start of the first race of the day.

18. SUPPORT AND COACH BOATS

- 18.1. Except when rendering assistance to a boat in danger at the boat's request or at the request of the race committee, team leaders, coaches, and other support personnel shall stay at least 100 meters outside areas where boats are racing from the time of the preparatory signal for the first event to start until the time the last boat finishes or the race committee signals a postponement, general recall or abandonment.
- 18.2. Each boat carrying coaches and/or support personnel shall display an identification number. Numbered identification stickers will be provided by the organizing authority at registration.
- 18.3. All team leaders, coaches, and other support personnel shall register at the registration offices before 10:00 hours, March 18th 2010 at the SC Labud.

18.4. The penalty for failing to comply with these requirements or the verbal instructions of the race committee or the jury may be applied to any or all boats associated with the support or coach boat.

19. OFFICIAL BOATS:

Official Regatta committee boats will fly white flags with RC letters. Jury boat will fly white flags with JURY letters. Failure to display flag as prescribed in this instruction can not ground for redress.

20. TRASH DISPOSAL

Boats shall not put trash in the water. Trash may be placed aboard support and race committee boats.

21. RADIO COMMUNICATION

Except in an emergency, a boat shall neither make radio transmissions while racing nor receive radio communications not available to all boats. This restriction also applies to mobile telephones.

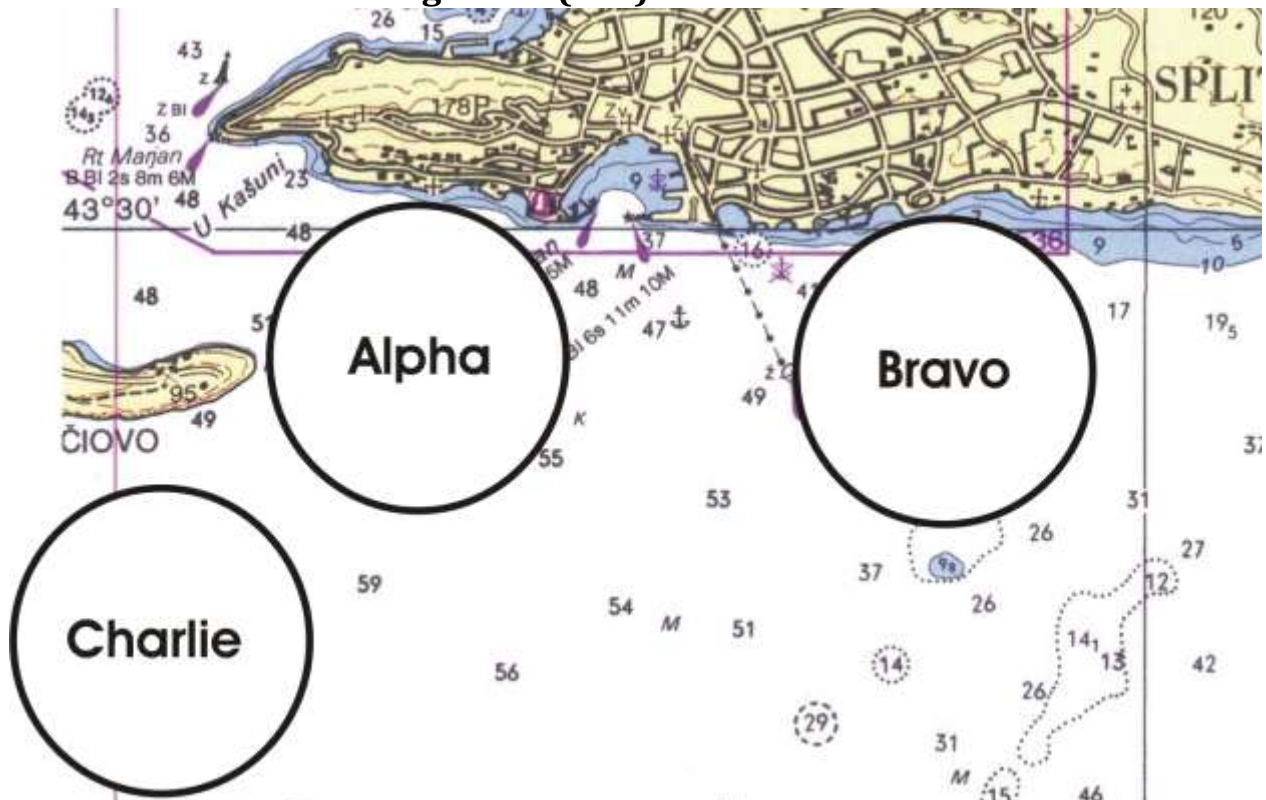
22. DISCLAIMER OF LIABILITY:

Competitors participate in the regatta entirely at their own risk See rule 4, Decision to Race. The organizing authority will not accept any liability for material damage or personal injury or death sustained in conjunction with or prior to during, or after the regatta.

23. INSURANCE

Each participating boat shall be insured with valid third-party liability insurance with a minimum cover of EUR 500,000 per occurrence or the equivalent.

Attachment A – Racing Areas (SI 8)



Course Assignments (may be changed by SI 3):

All fleets will sail on one course. During races RC may move from one racing area to another. Initial racing area will be area Alpha.

Flag D over B ashore ammends SI 4.2: „Initial sailing area is area Bravo.“

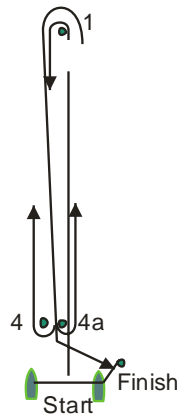
Flag D over C ashore ammends SI 4.2: „Initial sailing area is Charlie.“

Attachment B

Target race times, race time limits (SI 14), protest filing time limits (SI 15.2), all in minutes

Class	Target Race Time	Race Time Limits		Protest Time Limit
		Mark1	Finish Window	
470 M&W	60	30	20	60
LASER	60	30	20	60
LASER RADIAL M&W	60	30	20	60
FINN	60	30	20	60
RSX M&W	45	30	20	60

Attachment C – Courses (SI 8)



Course Designation **1**

RS-X

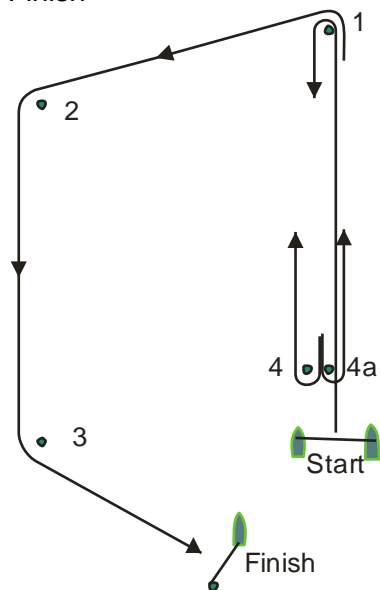
Start – 1 – 4or4a – 1 – 4a – Finish

Inner Trapezoid

Course Designation **I1 or I2**

I1: Start – 1 – 4 or 4 a – 1 – 2 – 3 – Finish

I2: Start – 1 – 4 or 4a – 1 – 4 or 4 a – 1 – 2 – 3 – Finish



Outer Trapezoid

Course Designation **O1 or O2**

O1: Start – 1 – 2 – 3or 3a – 2 – 3 - Finish

O2: Start – 1 – 2 – 3 – 2 – 3or 3a – 2 – 3– Finish

